

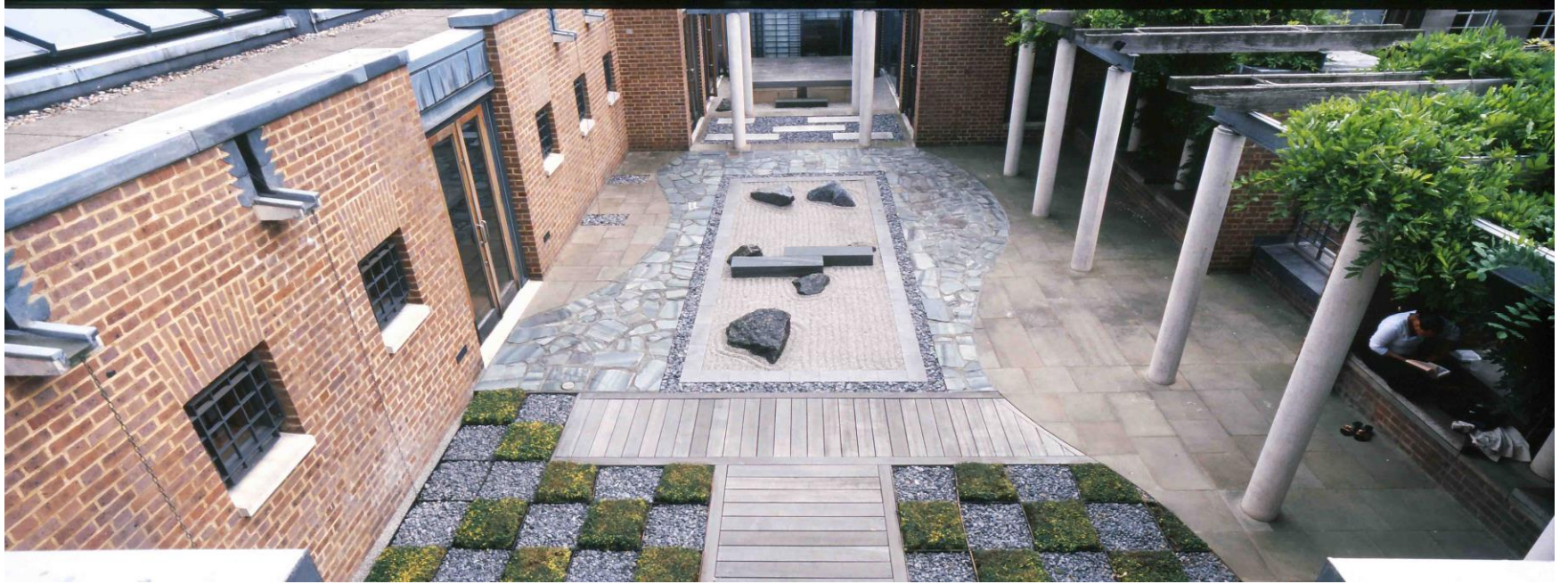




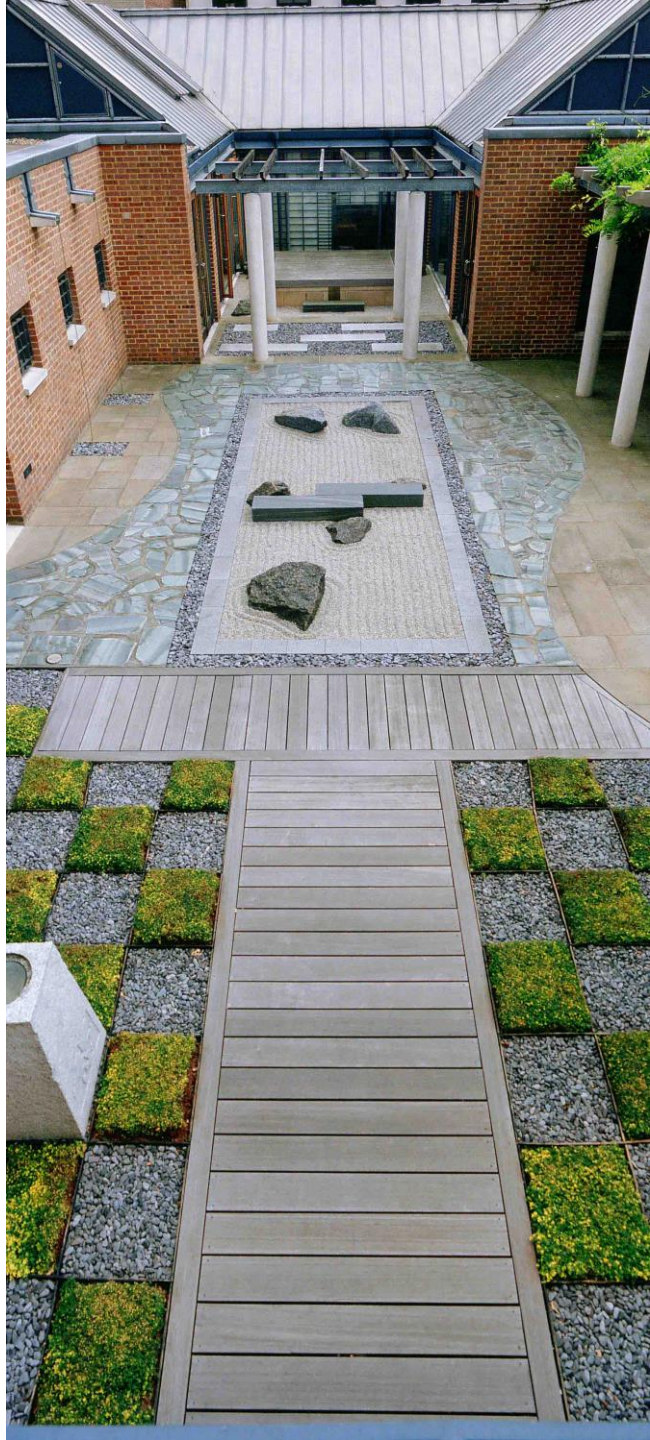




SOAS









SCHOOL OF ORIENTAL STUDIES - FINSBURY CIRCUS
1917-36



THE COMMON ROOM



THE THEATRE



DETAIL OF ONE OF THE ANTAE AND A LANTERN



THE VISTA FROM THE VESTIBULE, LOOKING THROUGH TO THE STAIRCASE HALL



請向此處取章程或向本校函索
官商教士遊人所急需者有志來學者

THE SCHOOL OF ORIENTAL STUDIES

LONDON INSTITUTION
FINSBURY CIRCUS, E.C.2.



INSTRUCTION IS GIVEN IN

CHINESE

A KNOWLEDGE OF WHICH IS
ESSENTIAL TO TRAVELLERS,
MISSIONARIES, SPORTSMEN,
MERCHANTS, CIVIL SERVANTS
AND OTHERS.

*Prospectuses may be
obtained here.*

東方文字學校

教授華文及各
種東方文字為



SCHOOL OF ORIENTAL STUDIES, LONDON INSTITUTION UNIVERSITY OF LONDON, OCT. 1924.

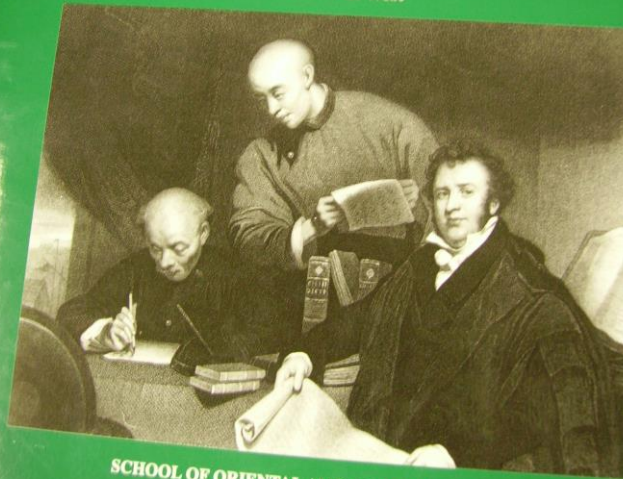
NORTH BRITISH PANORAMIC CO. 20 PARADE ROAD, NEWCASTLE, N.S.W., N.S.W.

Deposited on loan by
University College, London.
at the
School of Oriental Studies.

University College, London. School of Oriental Studies.
Gower Street, W.C. Finsbury Circus, E.C.

**Catalogue of the
Morrison Collection
of Chinese Books**
馬禮遜藏書書目

Andrew C. West



**SCHOOL OF ORIENTAL AND AFRICAN STUDIES
UNIVERSITY OF LONDON**

- 1938 (Sir Reginald Fleming Johnston (1874-1938) 16,000 volumes, Chinese, English, a few of Japanese and Sanskrit.
- Funds from Sino-British Fellow Trust to compile a list of his collection (Shelfmark: prefix: RJ)
- 1936 German Walter Simon ((1893-1981). He was Librarian of University of Berlin (1922-1935), and also a Sinologist. He was a visiting scholar, became Reader at the Far East Department. 1948 became 2nd Chair of Chinese
- He invented the Chinese classification scheme and reclassified the Chinese collection



A 155.89

For some critical remarks on this book, see W. J.
Perry's article on Class Divisions in Hilbert Journal,
April 1922, pp. 513 ff.



樂淨山齋

R. F. Johnston

March 14, 1922.

陳舒花卉

ENGLISH - BRAHMI VOCABULARY

M5

62612

62612

To Mrs Johnston
from The Manchu Emperor.
6th July, 1926.



CH'ËN Shu. [tzü, Yüan-shu; hao, Tao-shan.]

An album of flower paintings. Signed all through Yüan-shu,
with the seals "Ch'ên Shu chih yin" and Tao-shan. No date.

2nd half of 17th century.

58.5.

宣統御題
此以誌紀念

丙寅五月廿七日



淡
花
三
月

初
三
日

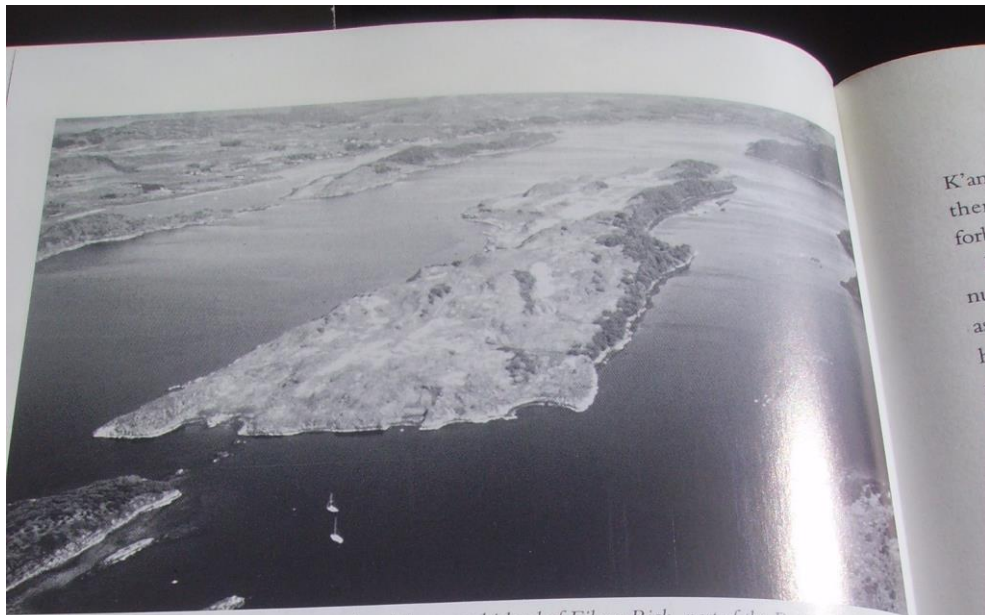
心
志
一

意

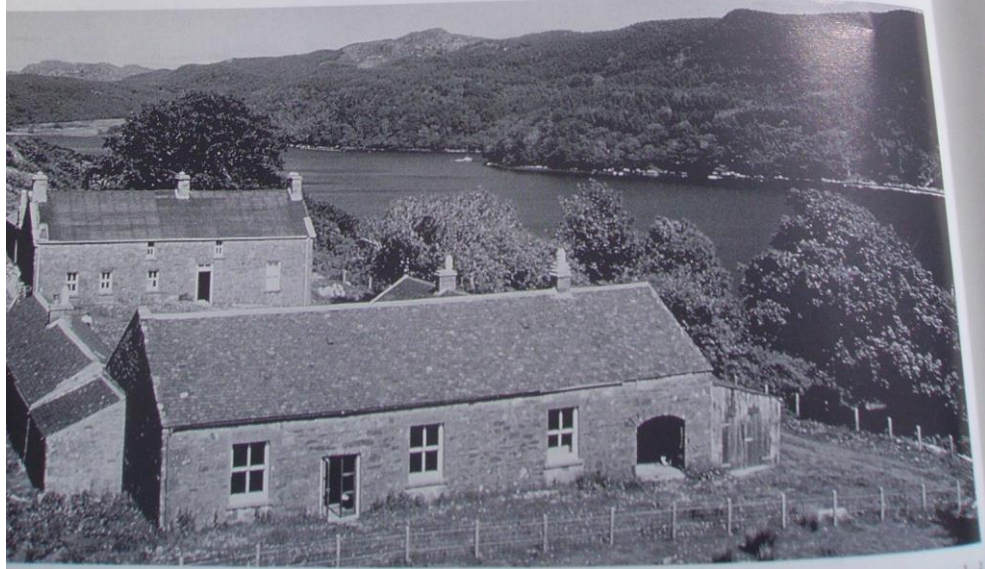
不
可
少







In 1934 Reginald Fleming Johnston purchased the rugged island of Eilean Righ, part of the Pollock Estate, Gilmartin, West Argyllshire. He transformed the island in Loch Craignish into a 'tiny piece of China'; a pavilion-style house set amid acres of poppies modelled on a Chinese poppy garden was its centrepiece. (Auntie's Collection)



House and outbuildings at Eilean Righ, photographed by G. D. ...

K'an
ther
fort
I
nu
as
h
t



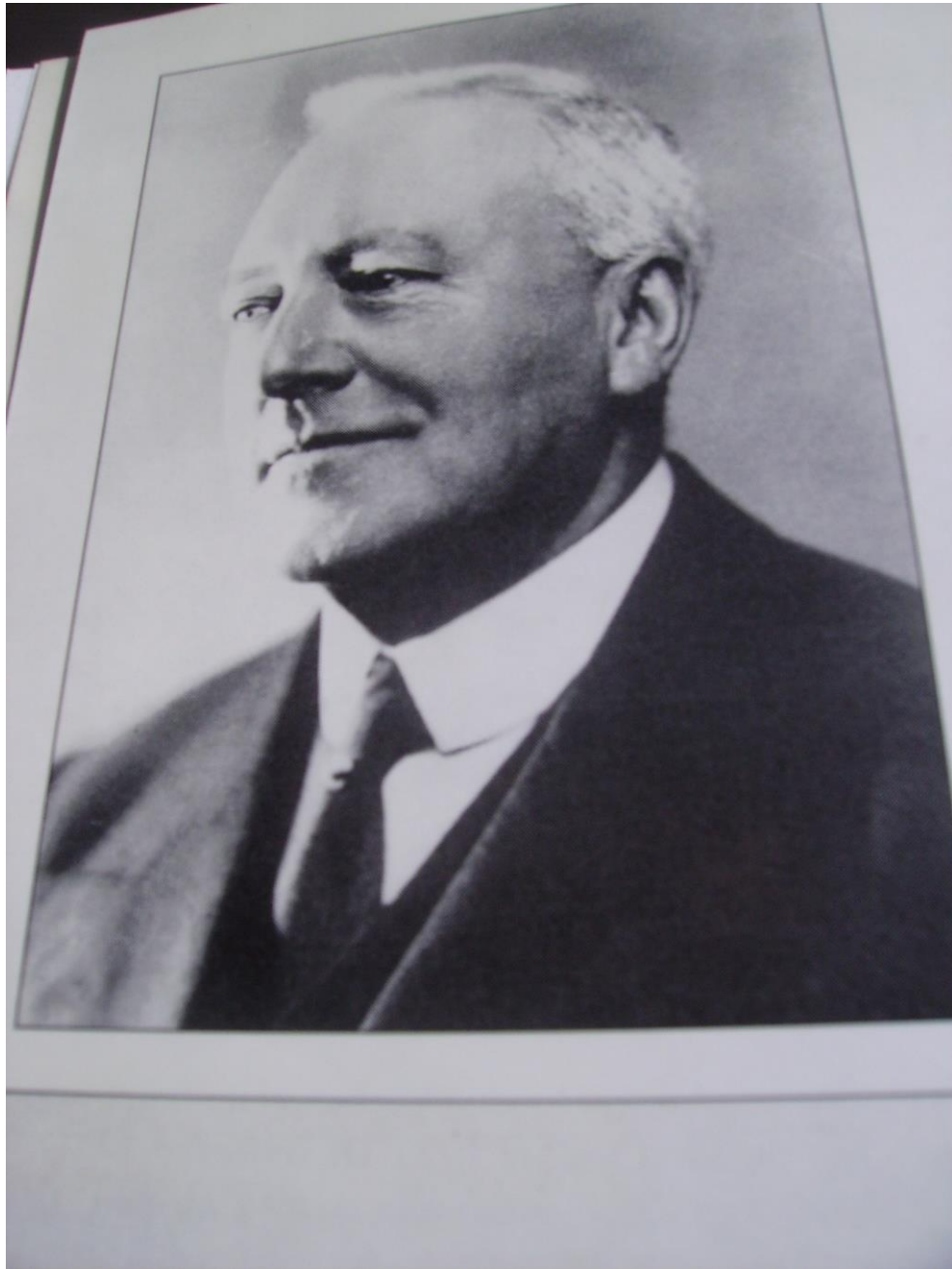
PROFESSOR W. SIMON.

PROFESSOR OF CHINESE.
HEAD OF THE DEPARTMENT OF THE FAR EAST.

1921~1955



PROFESSOR EVE D. EDWARDS.
PROFESSOR OF CHINESE.
HEAD OF THE DEPARTMENT OF THE FAR EAST.
ACTING HEAD OF THE PERCIVAL DAVID FOUNDATION.



Thank you very much!